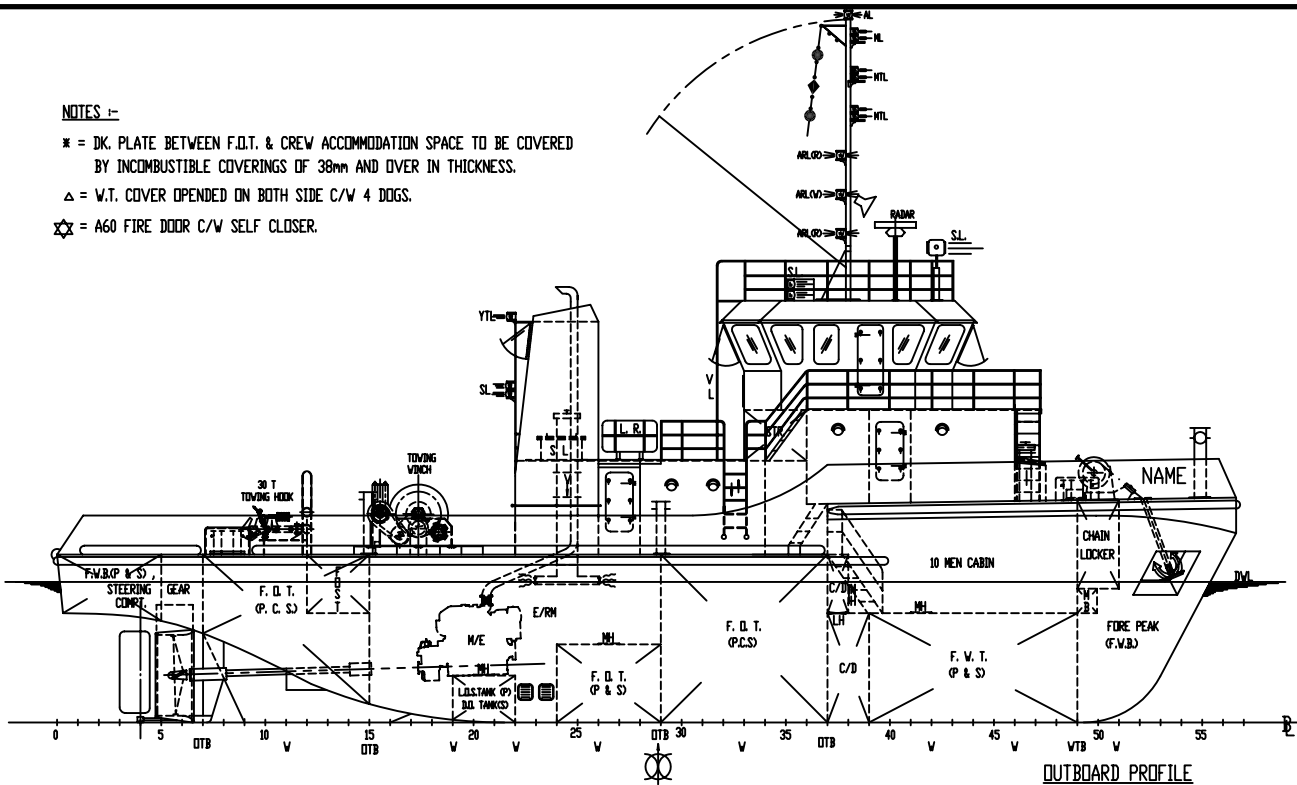
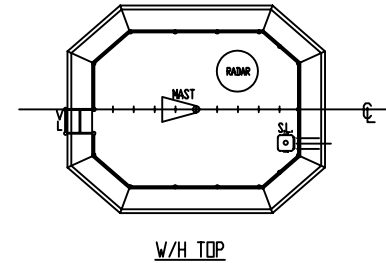


NOTES :-

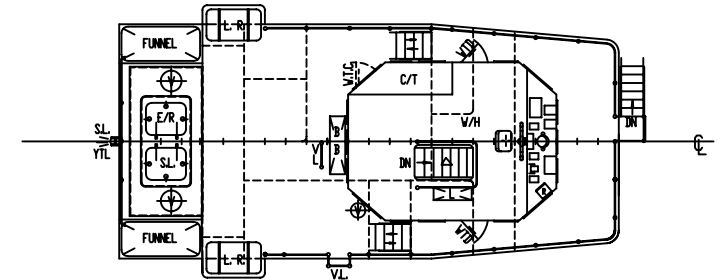
- * = DK. PLATE BETWEEN F.D.T. & CREW ACCOMMODATION SPACE TO BE COVERED BY INCOMBUSTIBLE COVERINGS OF 38mm AND OVER IN THICKNESS.
- △ = W.T. COVER OPENED ON BOTH SIDE C/W 4 DOGS.
- ☆ = A60 FIRE DOOR C/W SELF CLOSER.



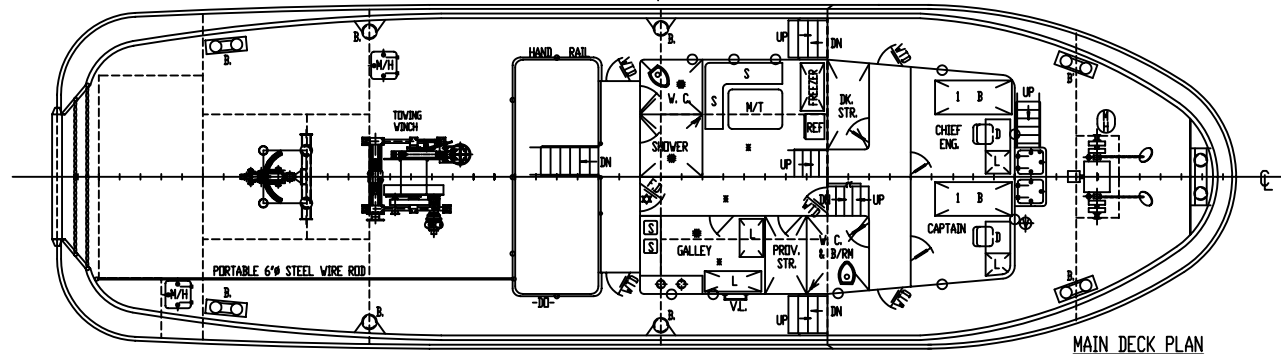
OUTBOARD PROFILE



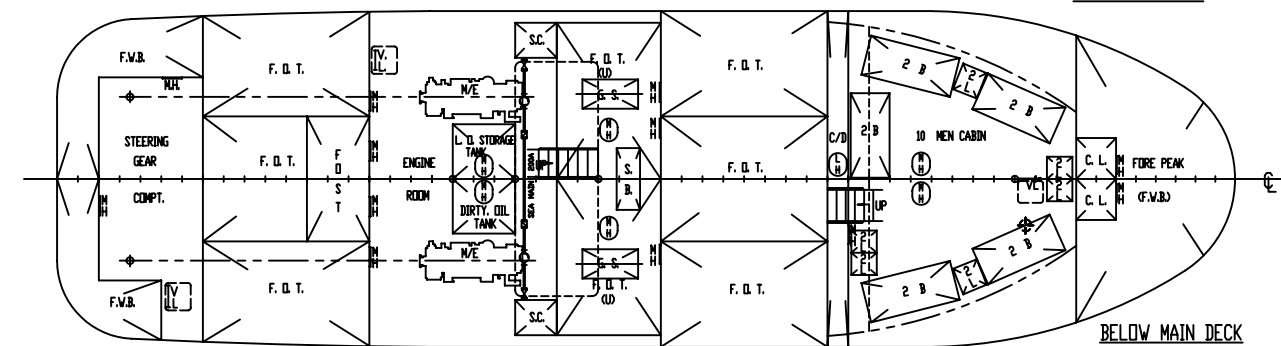
W/H TOP



WHEELHOUSE DECK



MAIN DECK PLAN



BELOW MAIN DECK

PRINCIPAL PARTICULARS :-

| | | |
|--------------------|---|---|
| LENGTH O. A. | T | 30.182 M (99.00 FT) |
| LENGTH B. P. | T | 27.39 M (89.867 FT) |
| LENGTH W. L. | T | 29.453 M (96.635 FT) |
| BEAM MLD | T | 8.60 M (28.21 FT) |
| DEPTH MLD | T | 4.30 M (14.10 FT) |
| DESIGNED DRAFT | T | 3.60 M (11.812 FT) |
| ACCOMMODATION | T | 12 MEN |
| FUEL OIL | T | 275.00 M ³ (233.75 T) (100% FULL) |
| FRESH WATER | T | 62.50 M ³ (62.50 T) (100% FULL) |
| BALLAST (F.V.B.) | T | 55.00 M ³ (55.00 T) (100% FULL) |
| L.O.S.T. | T | 2.40 M ³ (100% FULL) |
| DIRTY OIL TANK | T | 2.40 M ³ (100% FULL) |
| MAIN ENGINE | T | 2 X YANMAR 6RY17P-GV 1000 PS / 1500 RPM EACH |
| GEAR BOX | T | NICO MGN 91 BL 5.04 : 1 RATIO |
| GENERATOR | T | 2 X 50 KW EACH |
| FREE RUNNING SPEED | T | 10 KNOTS (APPROX.) |
| DESIGNED B.P. | T | 28 TONNES (APPROX.) |

This Drawing and the Information contained herein is supplied on the understanding that they are the exclusive property of WANG SANG & ASSOCIATES SDN. BHD. They must not be used or reproduced in whole or in part without permission in writing.

| DATE | MODIFICATION | REV | BY |
|--|---|----------|--------------------|
| | | | |
| DESIGNER | | | |
| WANG SANG & ASSOCIATES SDN. BHD. | | | |
| (COMPANY NO:587290-V) | | | |
| (MARINE DESIGNS ENGINEERING & SUPERVISION) | | | |
| 2nd FLOOR, 4C, LORONG JONG KONG, 96000 ; | | | |
| GPO L/B 18, NCS 50212, 96009 | | | |
| SIBU, SARAWAK, MALAYSIA. | | | |
| TEL:- 084-331582, 316434 (D), 318375 (R), FAX:- 084-322098 | | | |
| EMAIL: richwg@pc.jaring.my | | | |
| SHIP | | | |
| 30M T. S. TUG | | | |
| TITLE | | | |
| GENERAL ARRANGEMENT | | | |
| BUILDER | SAPOR SHIPBUILDING INDUSTRIES S/B, SIBU | | |
| OWNER | | | |
| CLASS | | YR. NO. | S11/2007, S12/2007 |
| TRADE | | P.O.R. | S'PORE |
| DRN | | JOB NO. | 06307 |
| | | SCALE | |
| | | DRG. NO. | |
| | | REV. | |
| 18/10/2007 | | 1 : 100 | WSD1303-07-G |

30M7283-G